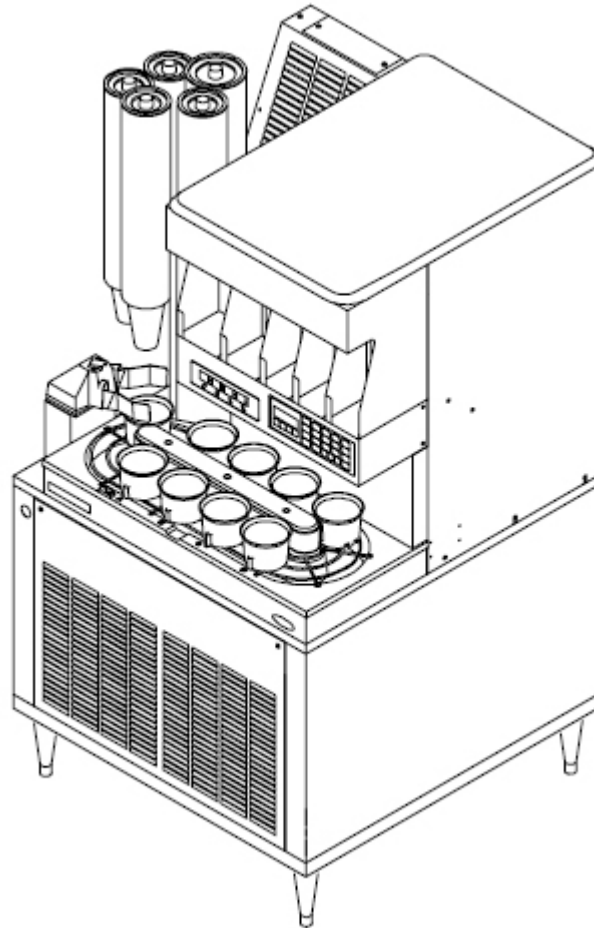


ILLUSTRATED PARTS LIST

AUTOMATED BEVERAGE SYSTEM





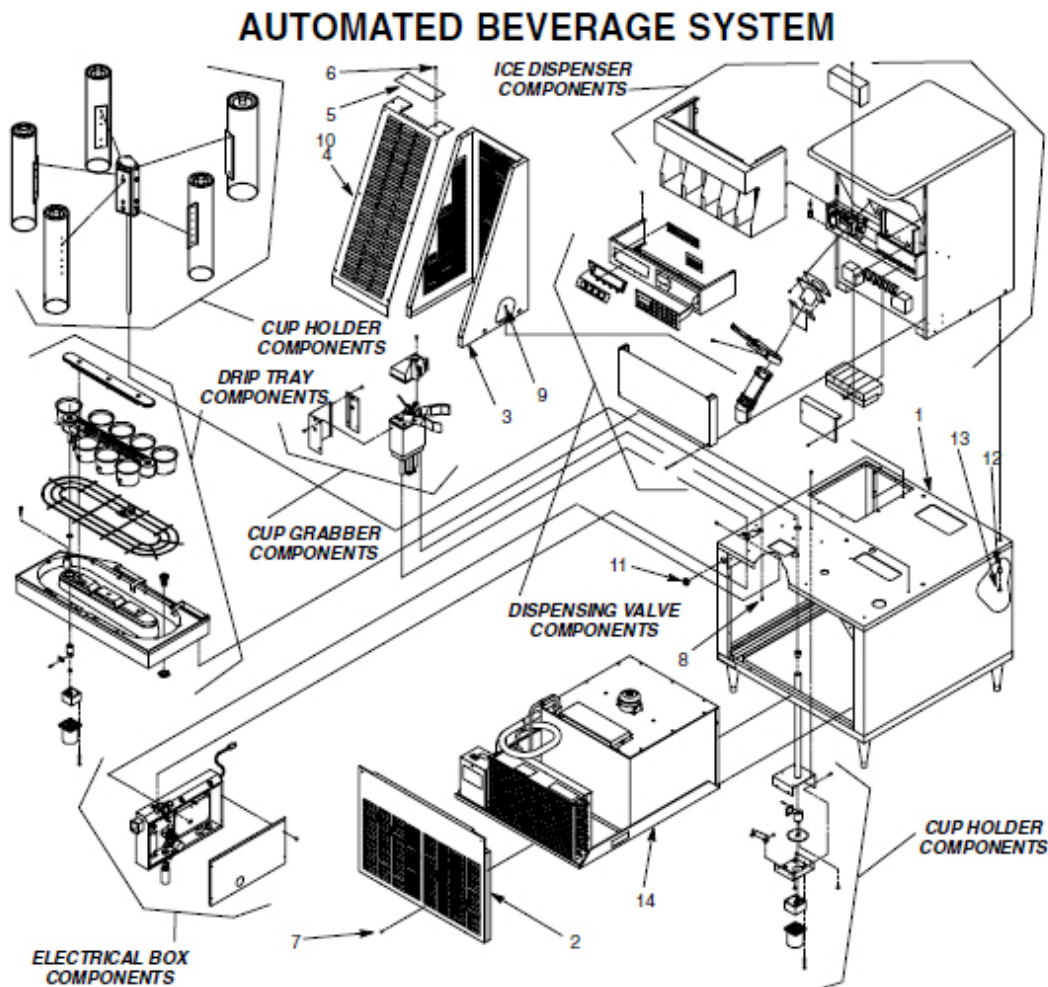


Figure 1. Automated Beverage System

Table 1. Automatic Beverage System

Item No.	Part No.	Description
1		Stand Assy (See Figure 2)
2	620052948 620002774 560000289	Panel Fnt w/ drain hole Panel Fnt w/o drain hole Units before 56A0019AB102
3	620052936	Panel Back Exhaust
4	620052935 620053305	Panel Vent Exhaust (For units before Ser. # 62A0619AB008) Panel Vent Exhaust (For units w/ Ser. # 62A0619AB008 & after)
5	560000245 620516680	Cover Line Access (For units before Ser. # 62A0619AB008) Cover Line Access (For units w/ Ser. # 62A0619AB008 & after)
6	331309000	Screw SM 8 TRPH 16
7	319941000	Screw TR 8-32 HXWS 12

Table 1. Automatic Beverage System

Item No.	Part No.	Description
8	161179001	Bolt MA 1/4-20 HX 20
9	342663000	Screw TC 8-32 PAPH 12
10	560000398	Screw MA 8-32 TRPH 16
11	325192000	Bushing Snap
12	560004900	Spacer
13	2476	Bolt MA 3/8-16 UNS 64
14	560000270 560002730	Chassis Rfg 120V 60HZ (See Figure 14) Chassis Rfg 230V 50HZ (See Figure 14)
15	560000385	POS Cable (not shown)

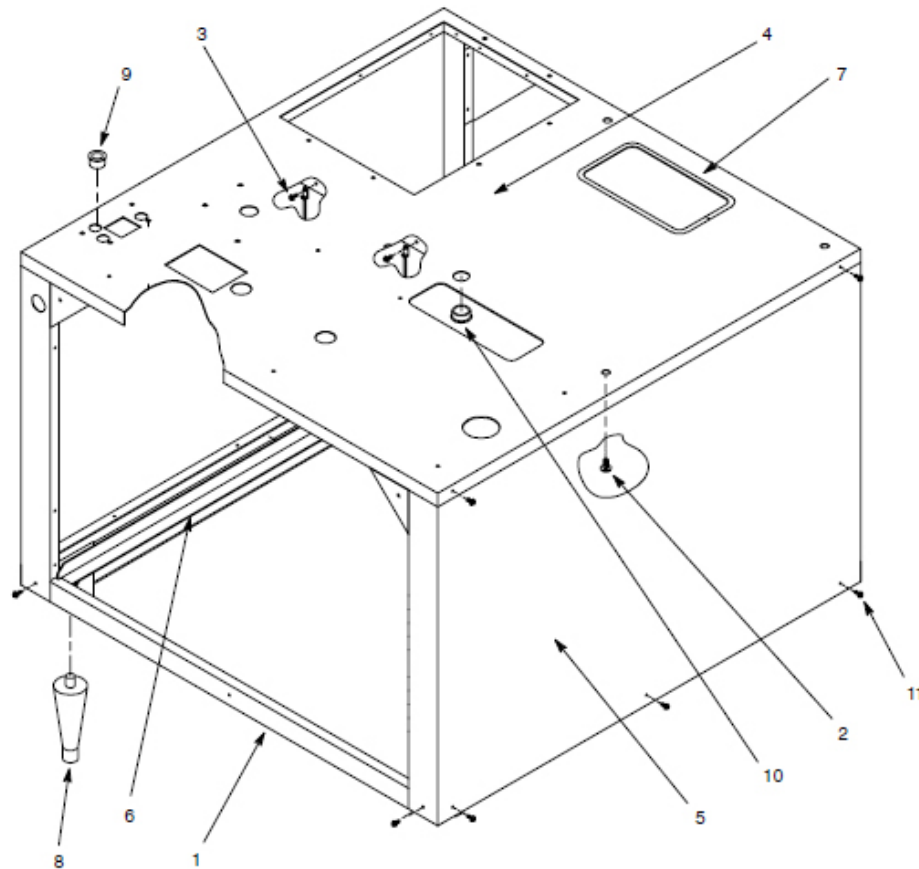


Figure 2. Stand Assembly

Table 2. Stand Assembly

Item No.	Part No.	Description
1	560002798	Frame Assy
2	560001561	Bolt MA 3/8-16 HX 48
3	342663000	Screw TC 8-32 PAPH 12
4	560002778	Panel Top Stand
5	560002797	Panel Side Stand - Australia
	620053317	both sides
	620053318	Panel Right Side
	620053318	Panel Left Side
6	560000256	Slide Refrig
7	89047	Trim Flex Vinyl

Table 2. Stand Assembly

Item No.	Part No.	Description
8	164136000	Leg Set
9	326006000	Bushing Snap .438 I.D.
10	560002627	Bushing Snap 1.3 I.D.
11	325282000	Screw SD 8-18 HXWS 16
12	629087488	Kit Instl Casters (Not Shown) Casters are for equipment placement only and MUST be removed and replaced with legs before machine is placed in operation.

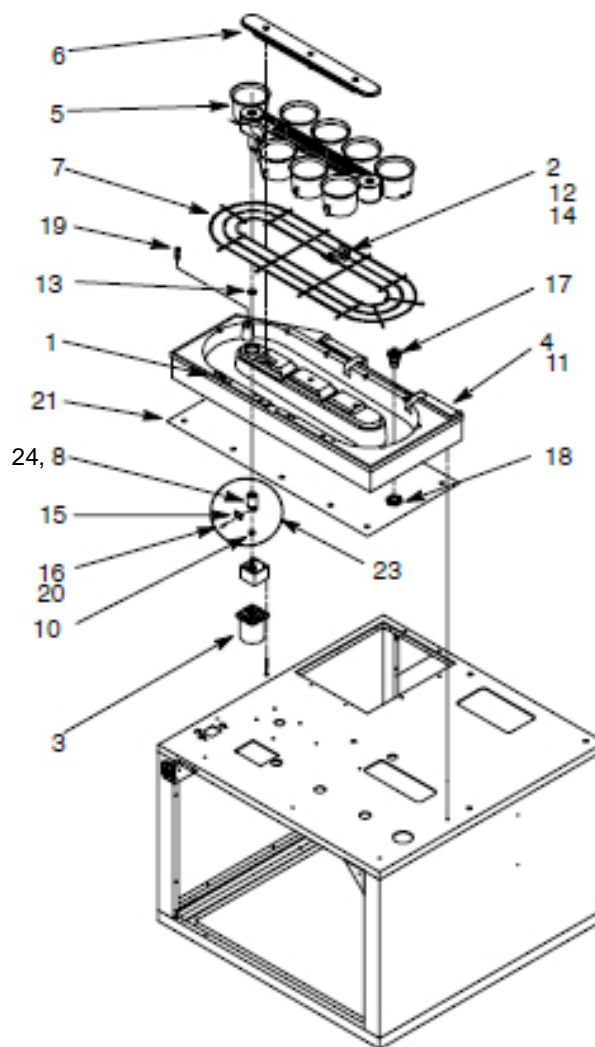


Figure 3. Drip Tray Components

Table 3. Drip Tray Components

Item No.	Part No.	Description
1	560000302	Sensor Thrubeam Recr/Emitr
2	318733000	Screw MA 6-32 TRPH 10
3	620519603 560002731	Gear Motor Drv. 6W 120V 60HZ Motor Drive 230V 50HZ
4	560000306	Drip Tray
5	569000295	Kit Replace Cup Conveyer (See Figure 4)
6	560000320	Cover Access Conveyer
7	560000315	Cup Rest Conveyer
8	620716605	Coupling Drive Conveyer
9		
10	560001566	Seal Shaft Convyer Drive
11	200468012	Screw SM 8 TRPH 24
12	560000368	Spring Cup Locator

Table 3. Drip Tray Components

Item No.	Part No.	Description
13	560002729	Deflector Wtr Convey
14	560000399	Nut Acrn 6-32
15	560001551	Coupling Conveyer
16	560001560	Screw MA 10-32 HXSO 24
17	560000323	Fitg Drain
18	560000324	Nut Drain Fitg
19	620314508	Sensor Conveyor Index
20	120227000	Washer Lk .194 I.D.
21	560002785	Gasket Drip Tray
22	620919383	Label Caution Moving Parts Crush (Not Shown)
23	629088365	Super Seal Kit
24	620519602	Seal, conveyor shaft (not shown)

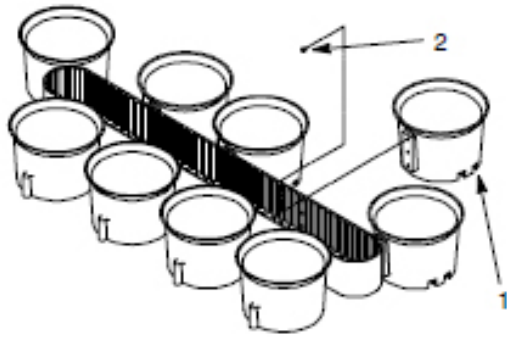


Figure 4. Conveyor Assembly

Table 4. Conveyor Assembly

Item No.	Part No.	Description
	569000295	Kit Replace Cup Conveyor
1	569030021	Holder Cup Replcmnt Kit
2	560000329	Screw MA 4-40 TRPH 10
3	560005978	Washer Retaining Cup Holder (Not Shown)

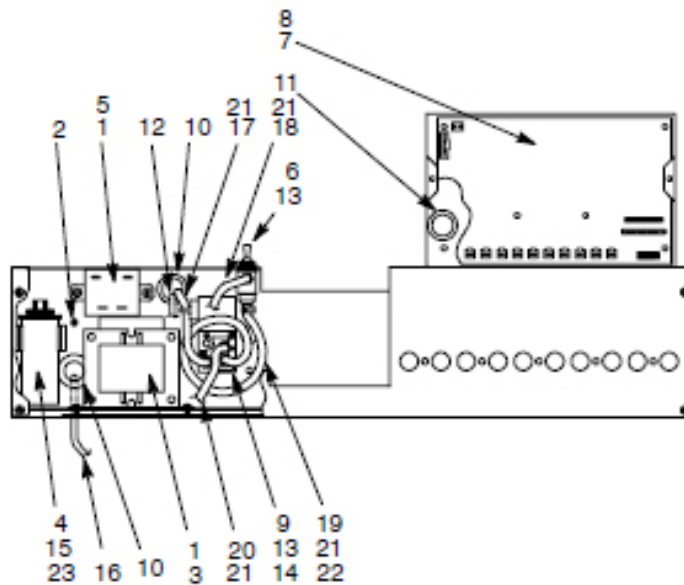


Figure 5. Control Box Components

Table 5. Control Box Components

Item No.	Part No.	Description
1	319941000	Screw TR 8-32 HXWS 12
2	200498003	Nut Hex 8-32
3	449999999 560002744	Transfrmr 120V 60HZ-24V Transfrmr 230V 50HZ-24V
4	560000395	Clip Capacitor
5	560000359	Relay
6	560000356	Valve Air Toggle
7	560000372 560000372LON	Board Circ Interface (Before 5-29-09) Board Circ Interface (After 5-29-09)
8	560001586	Support PC Board
9	560000390	Solenoid Air Flow Cntl
10	320389000	Bushing Snap .687 I.D.

Table 5. Control Box Components

Item No.	Part No.	Description
11	325800000	Bushing Split .812 I.D.
12	560000379	Harn Wire Valve-Cntl Board
13	560001503	Stem .170-Barb x 10-32
14	560001515	Screw TR 4-40 PAPH 40
15	320271000	Screw TC 6-32 PAPH 12
16	560001554	Harn Wire Cntl Box-Agit
17	560001595	Tube Cut Clr .125 I.D. x 65"
18	560001596	Tube Cut Clr .125 I.D. x 18 1/2"
19	560001597	Tube Cut Clr .125 I.D. x 7"
20	560001598	Tube Cut Blk .125 I.D. x 15"
21	311933000	Clamp
22	309972000	Clamp
23	30774 620308101	Capac 120V 60HZ Capac 230V 50HZ

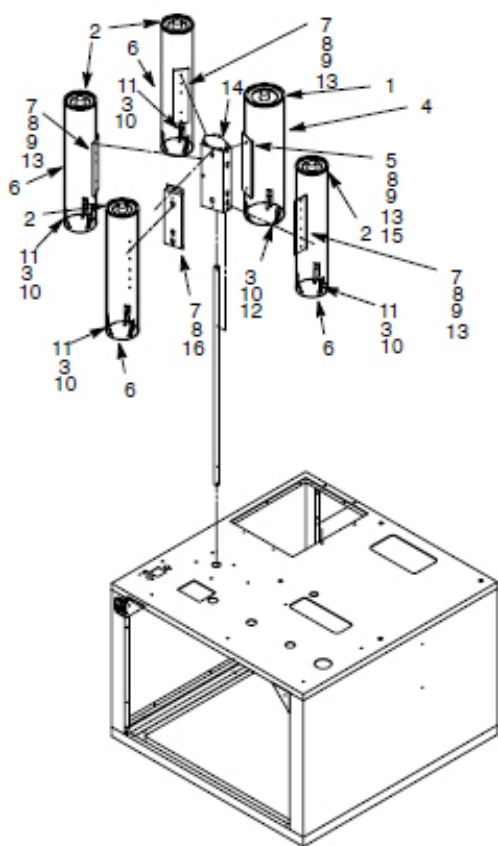


Figure 6. Cup Turret Components

NOTE: Cup tube kits include cup tube and misc. hardware.

Table 6. Cup Holder Components

Item No.	Part No.	Description
1	560000207	Cover Tube 5" Cup
2	560000206	Cover Tube 4" Cup
3	560000399	Nut Acrn 6-32
4	560000201	Cylinder Cup 32/42 oz
5	560000215	Brkt Cup Tube 32/42 oz
6	560000202	Cylinder Cup 12/16/21 oz
7	560000214	Brkt Cup Tube 12/16/21 oz
8	560000219	Nut Shldr 6-32 Lrge
9	560000354	Nut Shldr 6-32 Small
10	560001558 560001559	Finger Asy 16/21/42 oz Cup Finger Asy 12/32 oz Cup
11	560000204	Spacer Finger Cup Holder
12	560002745	Spacer Finger 32 oz Cup
13	560002749	Nut Hex 18-8
14		Column Components (See Figure 8)
15	560000351	Brkt Adap Cup Tube Extra Large-Medium
16	560002704	Brkt Adap Cup Tube Large-Small
	569000172 569000173 569000174 569000175 569000175Q0884 569000199	Kit Cup Tube 12 oz. Kit Cup Tube 16 oz. Kit Cup Tube 21 oz. Kit Cup Tube 32 oz. Kit Promo Cup Dispenser Tube Kit Cup Tube 42 oz.
	560000351 560002704	Bracket, XL-MD Bracket, LG-SM

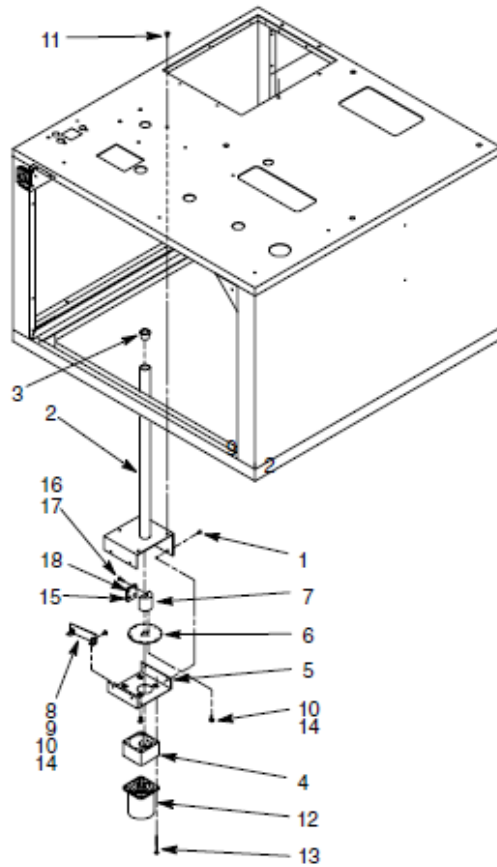


Figure 7. Cup Turret Components

Table 7. Cup Turret Components

Item No.	Part No.	Description
1	319941000	Screw TR 8-32 HXWS 12
2	560000230	Support Turret Mot Gear
3	560000231	Bushing
4	560000234	Box Gear Turret
5	560000236	Brkt Mtg Gear Box
6	560000238	Disc Turret Index
7	560000239	Hub Disc Index
8	560000232	Brkt Mtg Index Board
9	560000373	Board Circ
10	318733000	Screw MA 6-32 TRPH 10
11	161179001	Bolt MA 1/4-20 HX 20
12	620314917 560002733	Motor Drive 15W 120V 60HZ Motor Drive 230V 50HZ
13	560000322	Screw MA 10-32 PAPH 72
14	322967000	Washer Sr .317 I.D.
15	560001552	Coupling Turret Lower
16	560001560	Screw MA 10-32 HXSO 24
17	120227000	Washer Lk No. 10
18	560002629	Coupling Turret Upper

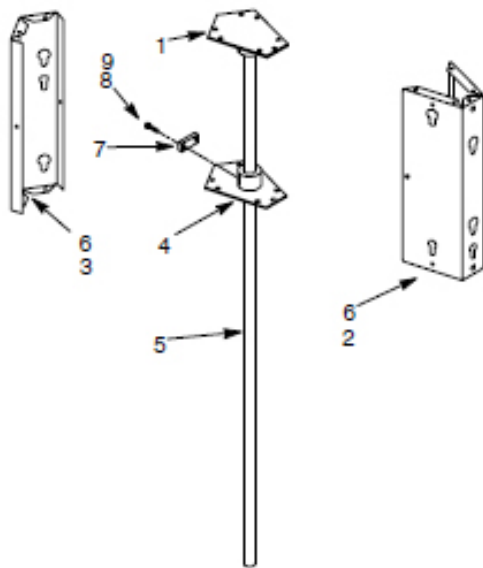


Figure 8. Column Components

Table 8. Column Components

1	560000216	Cap Top Column
2	560000211	Column Front
3	560000212	Column Back
4	560000217	Cap Botm Column
5	560000213	Shaft Drive
6	310461000	Screw TR 8-32 PAPH 12
7	560001553	Coupling Cup Hub
8	560001560	Screw MA 10-32 HXSO 24
9	120227000	Washer Lk No. 10

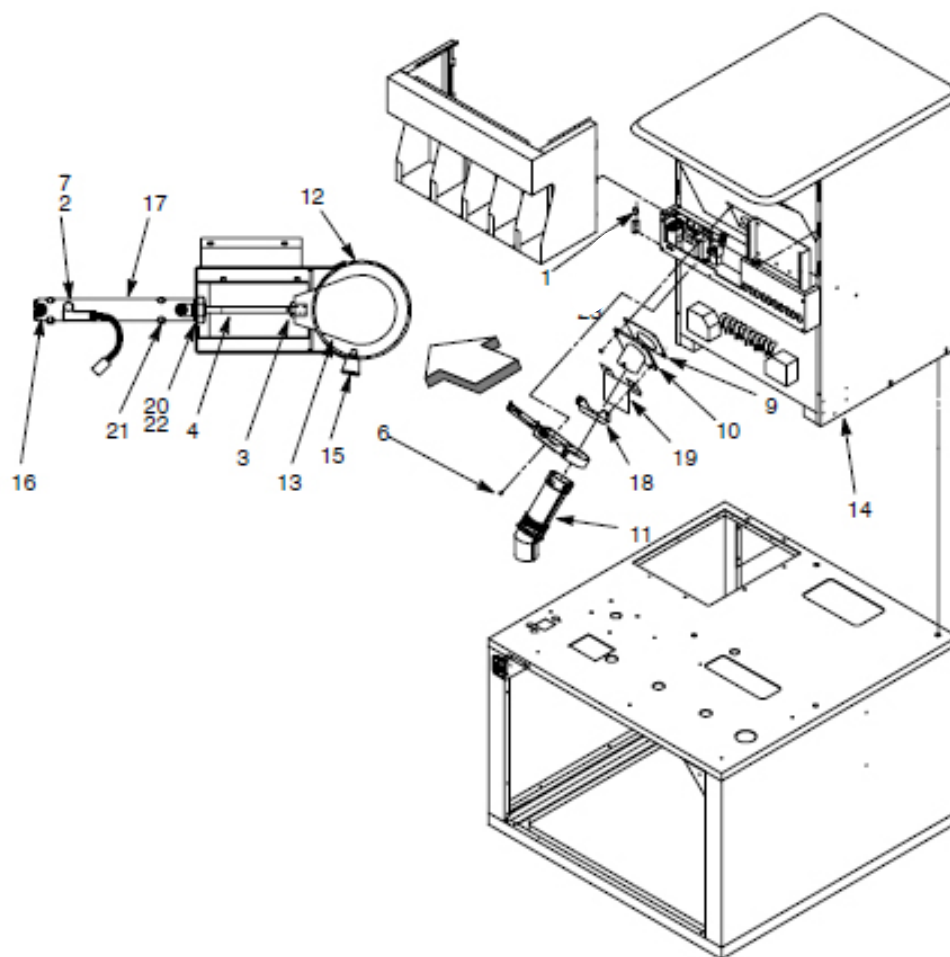


Figure 9. Ice Dispenser Components

Table 9. Ice Dispenser Components

Item No.	Part No.	Description
2	620720805	Screw MA M385 PAPH
3	398024400	Nut Hex No. 10-32
4	620200413	Cylinder Air
6	560000398	Screw MA 8-32 TRPH 16
7	620313270	Switch Reed Air Cyl
9	560000392	Gasket Ice Chute
10	560000344	Mount Ice Chute
11	560000346	Chute Ice Bottom
12	560000364	Brkt Asy Ice Chute
13	560000362	Plate Ice Chute

Table 9. Ice Dispenser Components

Item No.	Part No.	Description
14	620401401 620401402	Disp Asy (See Figure 11) Disp Asy (See Figure 11)
15	560002711	Retainer Plunger
16	560001503	Stem .170-Barb x 10-32
17	620052842	Brkt Ice Gate Sensor
18	560002728	Stiffner Ice Chute
19	560001548	Shield Ice Chute
20	311279000	Washer Sr .448 I.D.
21	040056000	Tie Cable
22	185186000	Nut Hex 7/16-20

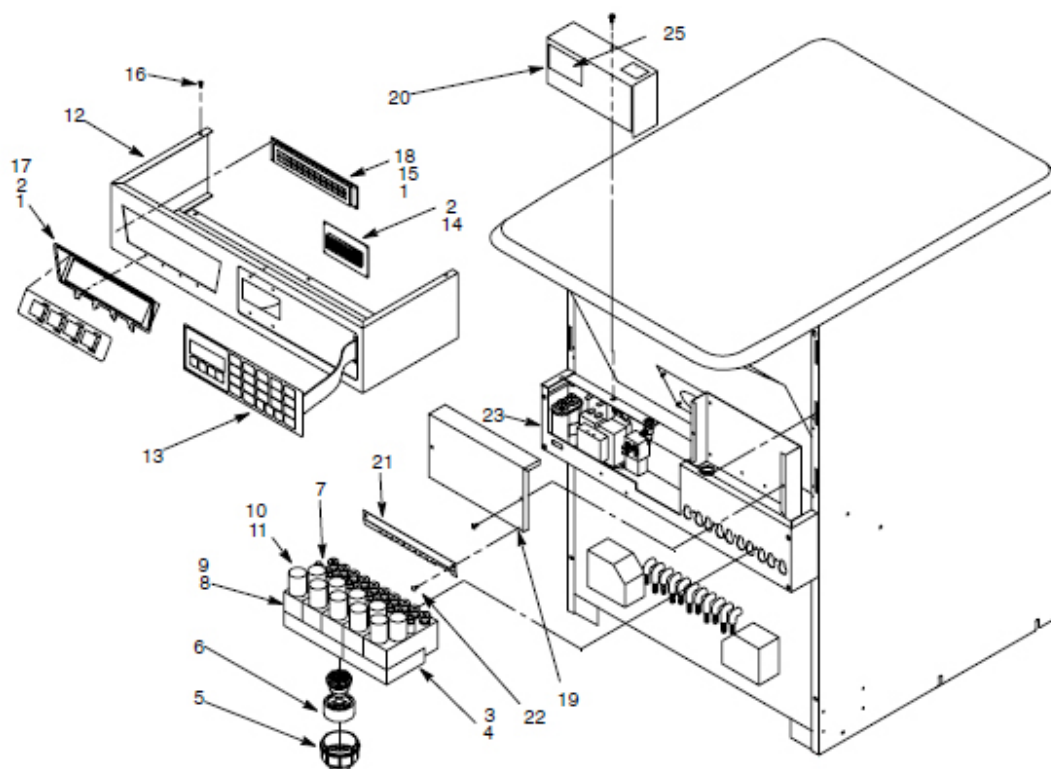


Figure 10. Dispensing Valve Components

Table 10. Dispensing Valve Components

Item No.	Part No.	Description
1	560001562	Nut Push .125 Dia.
2	318733000	Screw MA 6-32 TRPH 10
3	271058	Val Multi-Favor ABS
4	172265000	O-Ring .362 I.D.
5	560001545	Nozzle Val
6	560001544	Diffuser Val
7	569000156	Kit Flow Reg Water Ceramic (Used on Serial No. 56A9916AB104 and after)
8	620313720	Solenoid Coil
9	560002715	Kit Plunger S.S. (Used before Serial No. 56A9916AB104)
	569000188	Kit Plunger Ceramic (Used on Serial No. 56A9916AB104 and after)
11	560002716	Kit Flow Cntl Syrup S.S. (Used before Serial No. 56A9916AB104)
	569000157	Kit Flow Cntl Syrup Ceramic (Used on Serial No. 56A9916AB104 and after)
12	560000205	Panel Display

Table 10. Dispensing Valve Components

Item No.	Part No.	Description
13	560000250	Switch Touch
14	560000371	Display LCD 4 x 20
15	560000370	Display LCD 2 x 24
16	560000398	Screw MA 8-32 TRPH 16
17	560001535	Insert Display Val Pnl
18	560002708	Washer Ft No. 6
19	560002782	Cover P.C. Board
20	560002783	Cover Elec Box
21	560004903	Skirt
22	630900903	Fastner
23		Elec Box Component (See Figure 5)
24	560000369	Decal Set (Not Shown)
25	560001511	Schematic
26	620316010	Cable for board 560000371
27	620316011	Cable for board 560000370

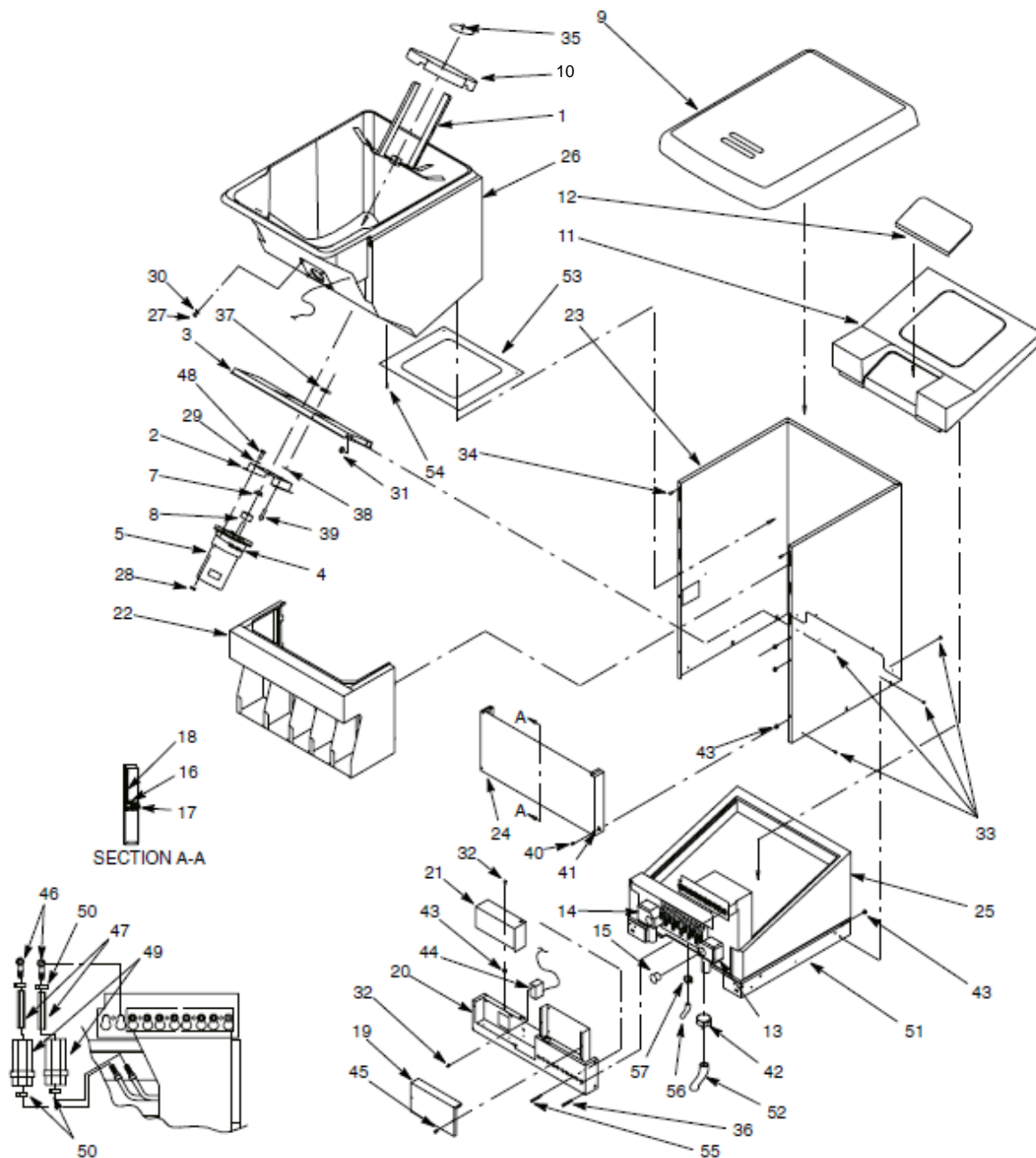


Figure 11. Dispenser Assembly

Table 11. Dispenser Assembly

Item No.	Part No.	Description
	620401401 620401402	Disp Asy 120V 60HZ Disp Asy 230V 50HZ
1	15346	Agitator Asy
2	29303R	Plate Motor Mounting
3	29304	Brkt Mtg Motor
4	30794 32826	Heater Agit Mtr 120V 60Hz Heater Agit Mtr 230V 50Hz
5	629085401 32824	Kit Agitator Mtr 120V 60Hz Kit Agitator Mtr 230V 50Hz

Table 11. Dispenser Assembly

Item No.	Part No.	Description
6	33617	Harn Wire Motor Agit (Not Shown)
7	51859	Seal Shaft Motor
8	52876	Gasket Motor Shaft
9	52887	Lid
10	53227	Agitator Disk
11	53236	Cover Cold Plate
12	53241	Cover Access
13	53276	Fitg Drain Asy Foamed RH
14	53277	Fitg Drain Asy Foamed LH

Table 11. Dispenser Assembly

Item No.	Part No.	Description
15	53282	Cap Plug Drain
16	53283	Tube Rectangle
17	53284	Tube D Section
18	53285	Insulation Splash Panel
19	620013701	Cover PCB
20	620013901	Plate Asy Elec Box and PCB
21	620014001	Cover, Elec Box
22	620014801	Lid Holder Asy
23	620014901	Wrap Cabinet
24	620017401	Panel Lower Asy
25	620401301	Cold Plate Asy
26	620502201	Hopper Asy
27	70016	Nut Hex No. 10-32
28	70018	Nut Hex 1/4-20
29	70048	Washer Sr .449 I.D.
30	70056	Washer Ft .219 I.D.
31	70076	Nut Hex No. 8-32
32	70171	Screw MA 8-32 TRPH 12
33	70178	Screw MA 8-32 TRPH 16
34	70204	Screw SM 8 TRPH 16
35	15087	Retainer Agitator
36	70555	ScREW MA 8-32 TRPH 84
37	70992	Receptacle 1/4-Turn
38	70993	Retainer 1/4-Turn
39	70994	Stud 1/4-Turn
40	71006	Screw MA 8-32 TRPH 72
41	71010	Washer Retaining No. 8
42	71086	Clamp
43	70959	Nut No. 8-32
44	31001	Thermostat
45	70215	Screw SM 8 HXWS 8
46	620700701	Fitg Out
47	52792	Tube Bev .265 I.D.
48	70260	Bolt MA 1/4-20 RDPH 32
49	50249	Tubg Insul
50	40502	Clamp
51	620017402	Base
52	50278	Tubg Amaclear
53	620505201	Shield Hopper
54	70478R	Clip Push-on
55	70242	Screw MA 10-32 TRPH 12
56	560001522	Tube Prod .375 I.D. x 28" Carb Water
	560001523	Tube Prod .375 I.D. x 35" Plain Water
	560001524	Tube Asy .375 I.D. x 37" Carb Water
	560001525	Tube Cut .375 I.D. x 96"
	560002706	Product Inlet Tube Asy Product Inlet No. 5

Table 11. Dispenser Assembly

Item No.	Part No.	Description
57	111353000	Clamp
58	560002702	Switch Soldout (Not Shown)
59	560001510	Label Operation (Not Shown)

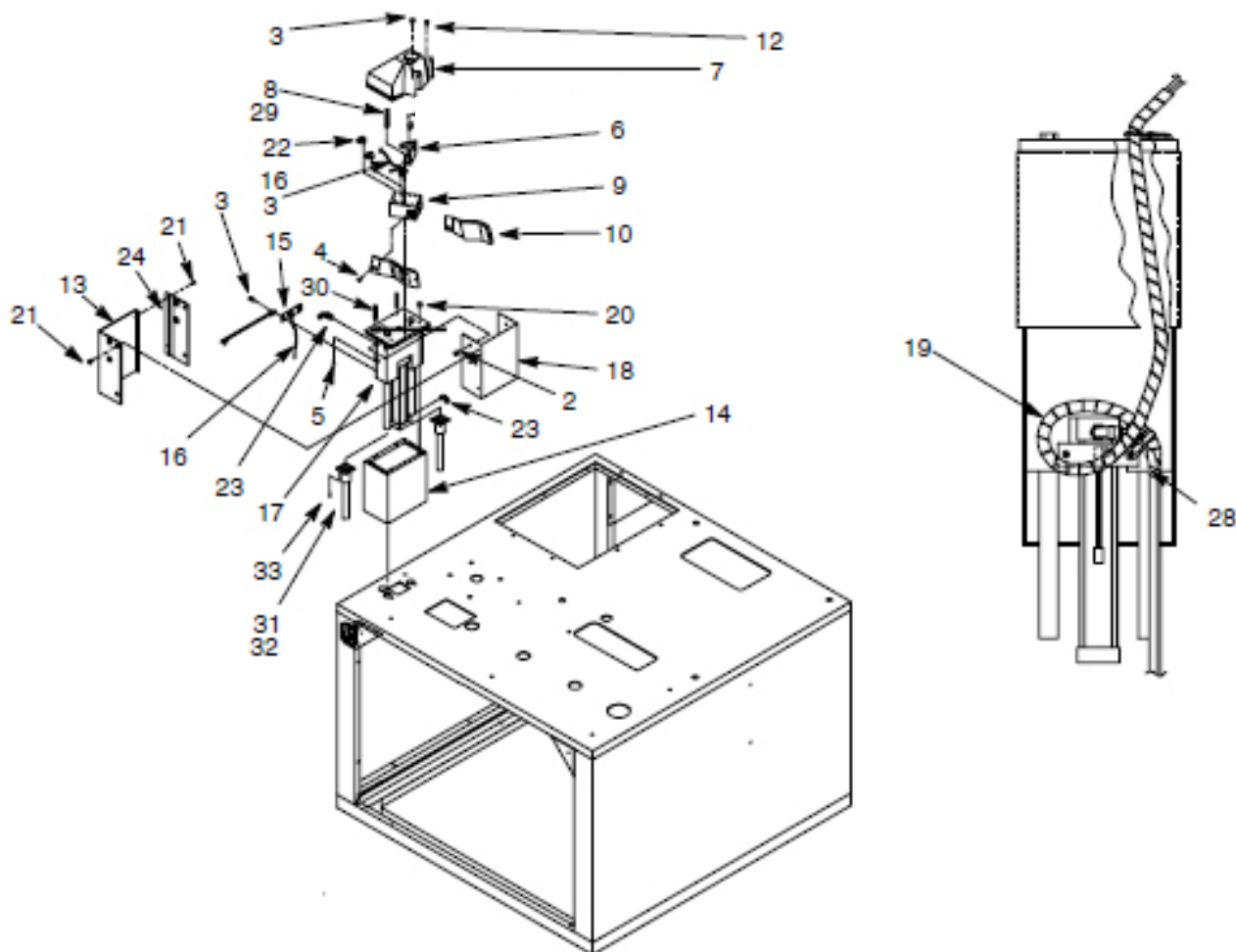


Figure 12. Cup Grabber Components

Table 12. Cup Grabber Components

Item No.	Part No.	Description
1		
2	560000226	Bolt MA 1/4-20 PAPH 12
3	318733000	Screw MA 6-32 TRPH 10
4	560001532	Screw MA 10-32 FLPH 14
5	322967000	Washer Sr .317 I.D.
6	560000366	Brkt Sensor Cup
7	560000386	Cover Cup Sensor
8	560000389	Screw MA 10-32 PAPH 64
9	560000208	Gripper Cylinder
10	629087539	Grabber Arms and Pads
11	629087538	Grabber Pads Only
12	560000398	Screw MA 8-32 TRPH 16
13	560000336	Cover Lift Cup Puller
14	560000340	Shield Cup Puller
15	620053218	Brkt Sensor
16	620313270	Switch Reed Air Cyl
17	620200417 1044744	Lift Assy Lift Cylinder Only

Table 12. Cup Grabber Components

Item No.	Part No.	Description
18	560000335	Brkt Lift Cup Puller
19	629088563	Harn Wire and Umbilical Ass'y Kit
20	330181000	Nut Hex No. 6-32
21	320271000	Screw TC 6-32 PAPH 12
22	560001534	Fitg Push L No. 10-32
23	560001533	Fitg Push L 1/8-MPT
24	560001555	Cover Back Cup Puller
	560001572	Harn WireSoldout Swt
	560001590	Tube Cut Red .094 x 39"
	560001591	Tube Cut Blk .094 x 39"
25	560001592	Tube Cut Red .094 x 20"
26	120227000	Washer Lk .323 I.D.
27	560002761	Standoff No. 6-32 x 1 1/4"
28	560002781	Tube Splash Guard
29	560002779	Mount Splash Tube
30	560000329	Screw MA 4-40 TRPH 10

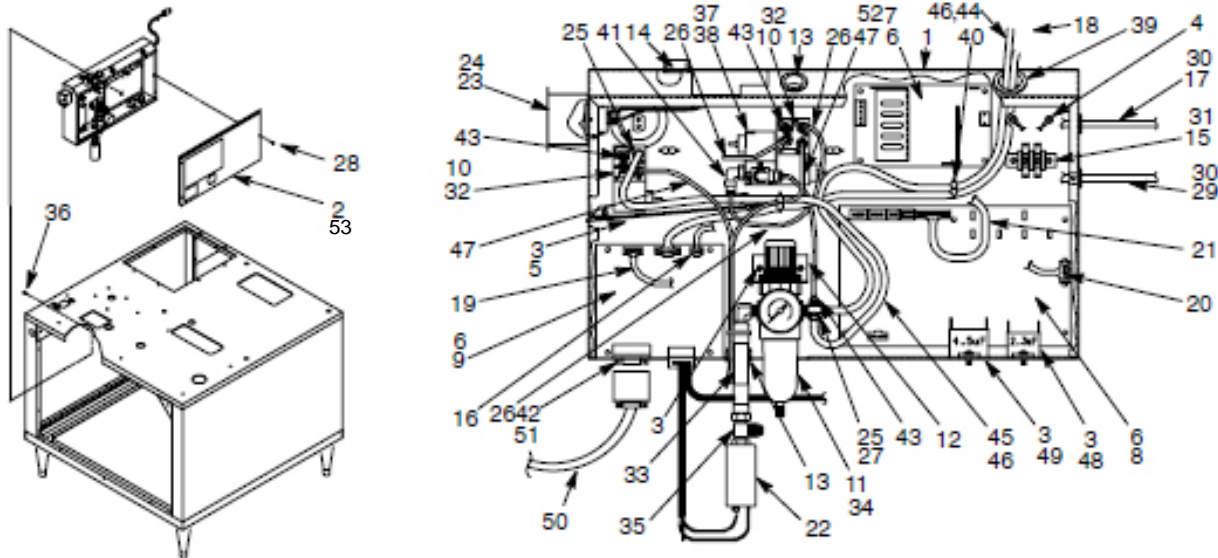


Figure 13. Electrical Box Components (Before 11-15-08)

Table 13. Electrical Box Components

Item No.	Part No.	Description
1	620043298 560002742LON	Box Cntl 120V 60HZ Boc Cntl 230V 50HZ
2	620053746	Cover Cntl Box
3	319941000	Screw TR 8-32 HXWS 12
4	200498003	Nut Hex No. 8-32
5	560002741	Shield Control Box
6	560001586	Support P.C. Board
7	560000376	Board Circ Power Supply 12V
8*	560000375LON 560002737LON	Board Circ Motion 120V 60HZ Board Circ Motion 230V 50HZ
9	560000374LON 560000374JPNLON 560000374SWLON 560002746LON 560002746SWLON	Board Circ Sensor 120V 60 HZ Board Circ Sensor 230V 50 HZ
10	560000390	Solenoid Air Flow Cntl
11	560000391	Reg and Filtr Air
12	560000360	Brkt Reg/Filter
13	320389000	Bushing Snap .687 I.D.
14	325800000	Bushing Split .812 I.D.
15	187876000	Block Term
16	560000380	Harn Wire Power
17	560000381	Harn Wire Cntl Box
18	560000383	Harn Wire Valve
19	560000384	Harn Wire Motion
20	560000377	Harn WireMain-Motion
21	560000378	Harn Wire Cntl Box-Motion
22	560000367	Switch Press Low
23	560000397 560002743	Brkt Switch Access 120V 60HZ Brkt Switch Access 230V 50HZ
24	309645000 560002735	Swt Rocker 120V 60HZ Swt Rocker 230V 50HZ
25	560001503	Stem .170-Barb x 10-32
26	560001593	Tube Cut .094 I.D. x 8"

Table 13. Electrical Box Components

Item No.	Part No.	Description
27	560001501	Body Fitg 1/8-MPT By 10-32
28	560002707	Nut Captive No. 8-32
29	560001568 560001326 620314734	Cord Serv 120V 60Hz Cord Serv 230V 50Hz - Australia Cord Serv 230V 50 Hz - Europe
30	186564000 4345	Strain Relief 1120 60HZ Receptacle 230V 50HZ
31	320240000	Screw TR 8-32 PAPH 16
32	560001515	Screw TR 4-40 PAPH 40
33	560001516	Tube Prod .265 I.D. x 3"
34	560001514	Nut Air Filter
35	176195100	Fitg T 7/16-20
36	310461000	Screw TR 8-32 PAPH 12
37	560001517	Solenoid Air Flow Cntl
38	560001530	Screw TR 4-40 PAPH 28
39	325192000	Bushing Snap .937 I.D.
40	0831	Clip Retain Syr Line
41	560001533	Fitg Push L 1/8-MPT
42	560001570	Standoff
43	560001519	Fitg Push .094 By 10-32
44	560001595	Tube Cut Clr .125 I.D. x 65"
45	560001596	Tube Cut Clr .125 I.D. x 18 1/2"
46	311933000	Clamp
47	560001571	Tube Cut Red .094 I.D. x 12"
48	620314311 560002734	Capac Run 120V 60HZ Capac Run 230V 50HZ
49	620314311 560002736	Capac Run 120V 60HZ Capac Run 230V 50HZ
50	560000380	Cable POS
51	560002761	Standoff
52	560004902	Cover Transformer
53	560000237	Schematic

*Due to the growing variation in board configurations, confirm the part number by looking on the board or contact Technical Services.

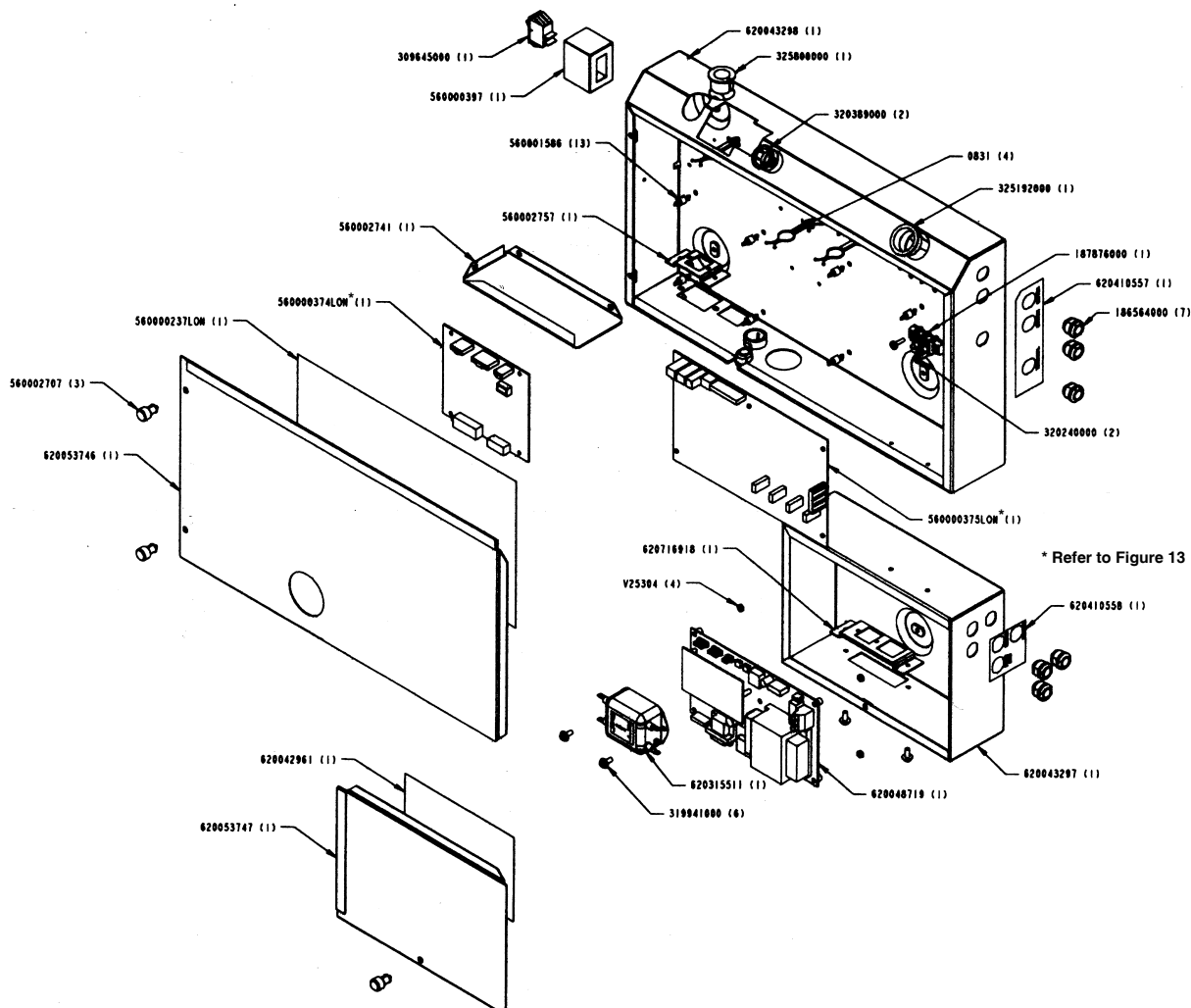


Figure 14. Smart Store Components

Table 14. Smart Store Components

Item No.	Part No.	Description
1	0831	Clip, retain
2	186564000	Strain Relief
3	187876000	Block Term
4	309645000	Sw Rocker SPST On/Off 20A
5	313945000	Nut Weld 8-32 SS RN
6	319941000	Screw TR 8-32 WIWS12 SIZE
7	320240000	Screw TR 8-32 PAPH16 SIZE
8	320389000	Bushing, Sn560002741ap
9	325192000	Snap Bushing
10	325800000	Bushing, Split
11	343843000	Screw, Spot Weld
12	560000397	Bracket
13	560001568	Cord, Service (Not Shown)
14	560001570	Standoff (Not Shown)
15	560001586	Standoff
16	560002707	Nut, Captive
17	560002741	Shield, ABS
18	560002757	Standoff, Circuit (Not Shown)
19	620042961	Label, Gateway

Table 14. Smart Store Components

Item No.	Part No.	Description
20	620043297	Box, Elect. ABS Control - Sm.
21	620043298	Box, Elect. ABS Control - Main
22	620048719	Gateway
23	620053746	Cover, Control
24	620053747	Cover, Cont. Bx Main ABS Sm.
25	620315511	Filter, Elect. Line ABS
26	620323697	Jumper, Wht. - Low Filter
27	620323698	Jumper, Blk. - Low Filter
28	620323699	Jumper, Grn/Yel - Low Filter
29	620323709	Harness, RS232 (Not Shown)
30	620323715	Harness, LON-Wiring
31	620323720	Jumper, Grn/Yel - Low Gateway
32	620410557	Label, Inlet Conn. Mn Bx, ABS Lo
33	620410558	Label, Inlet Conn. Gateway Bx
34	620716918	Standoff SS
35	560000200LON	Lead, Twin (Not Shown)
36	560000237LON	Label
39	V25304	Nut, Hex 4-40 SS (Not Shown)

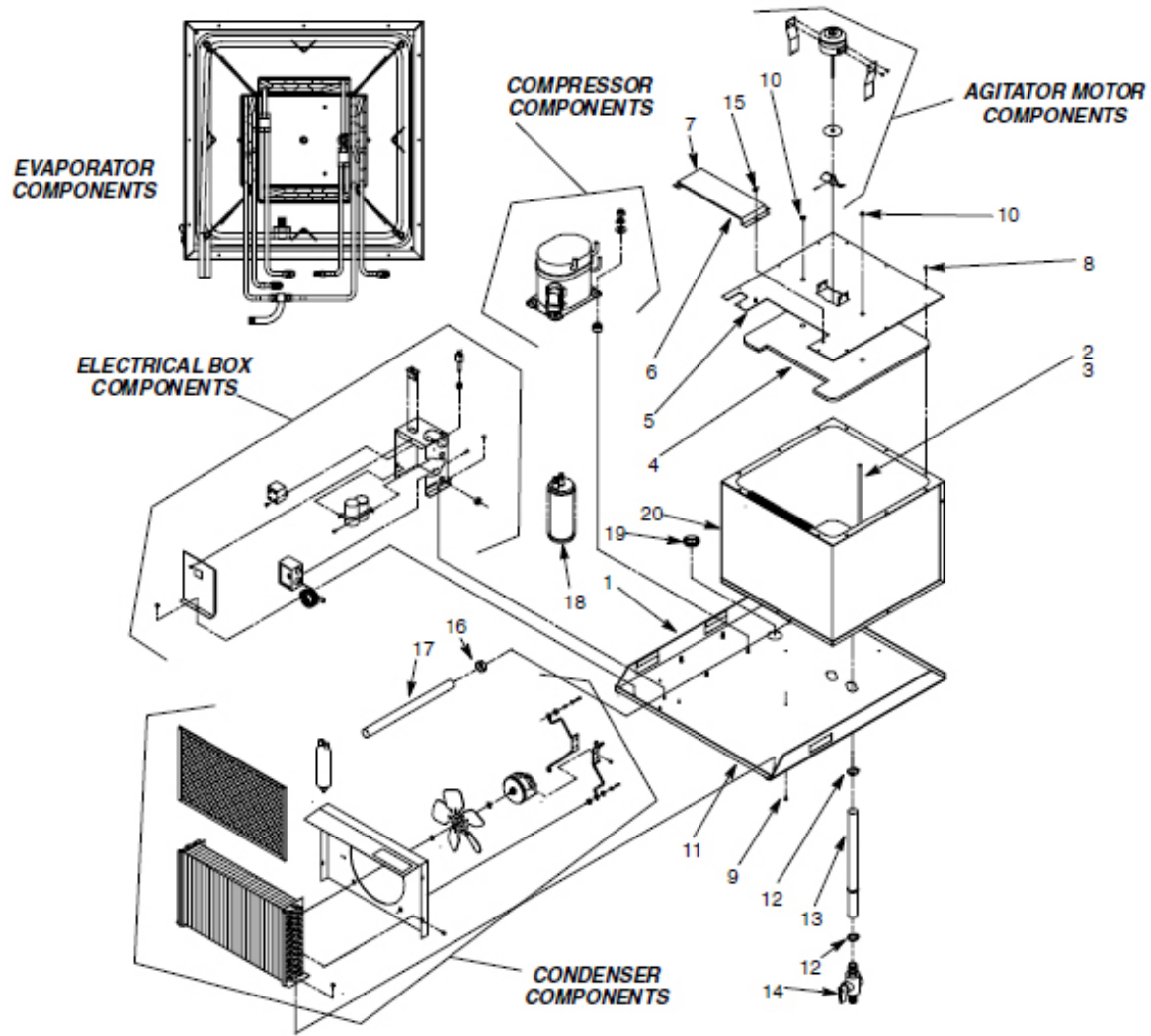


Figure 15. Refrigeration Deck Assembly

Table 15. Refrigeration Deck Assembly

Item No.	Part No.	Description
1	560000272	Base Rfg
2	560000265	Tube Overflow
3	300551000	Clamp Overflow Tube
4	560000279	Insulation Water Bath Cover
5	560000278	Cover Water Bath
6	560000257	Insulation Access Cover
7	560000258	Cover Access
8	319941000	Screw TR 8-32 HXWS 12
9	320940000	Screw SD 10-16 HXWS 20
10	331303000	Bushing Snap

Table 15. Refrigeration Deck Assembly

Item No.	Part No.	Description
11	560000256	Slide Refrig
12	319681000	Clamp Drain Tube
13	113500000	Tube Vinyl .500I.D. (Sold by the Foot)
14	313697000	Valve Shutoff
15	560000223	Nut Wing No. 8-32
16	300200000	Clamp
17	160809000	Tube Cut .375 I.D. x 36"
18	325408010	Accum
19	316963000	Bushing Snap
20	560000275	Tank Water Bath Assy

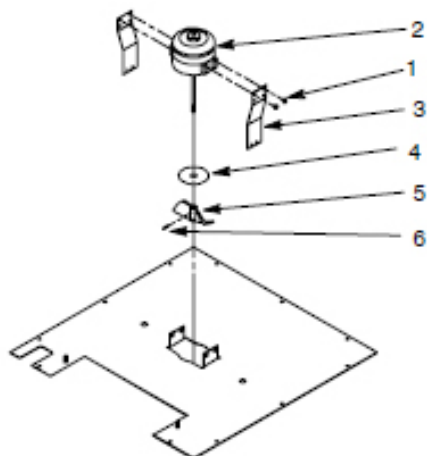


Figure 16. Agitator Motor Components

Table 16. Agitator Motor Components

Item No.	Part No.	Description
1	186154000	Screw SE 8-36 PAPH 12
2	111778000 560002780	Motor Agit 120V 60HZ 25W Motor Agit 230V 50HZ 25W
3	319856004	Plate Heat Transfer
4	186599000	Slinger Water
5	3600	Blade Agit 2-Blade
6	186610000	Pin Sprg

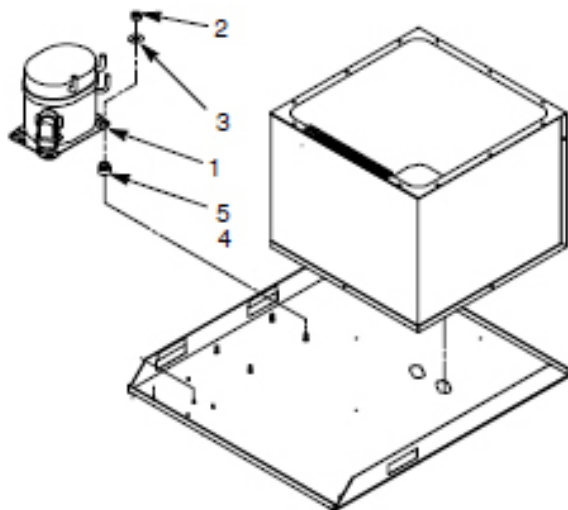


Figure 17. Compressor Components

Table 17. Compressor Components

Item No.	Part No.	Description
1	569000633 629087496	Kit Comp 3/4H.P. 120V 60HZ Kit Comp 3/4H.P. 230V 50HZ
2	186146000	Nut Hex 5/16-18
3	318418000	Washer Ft .312 I.D.
4	25200	Grommet Compressor
5	25356	Sleeve Compressor

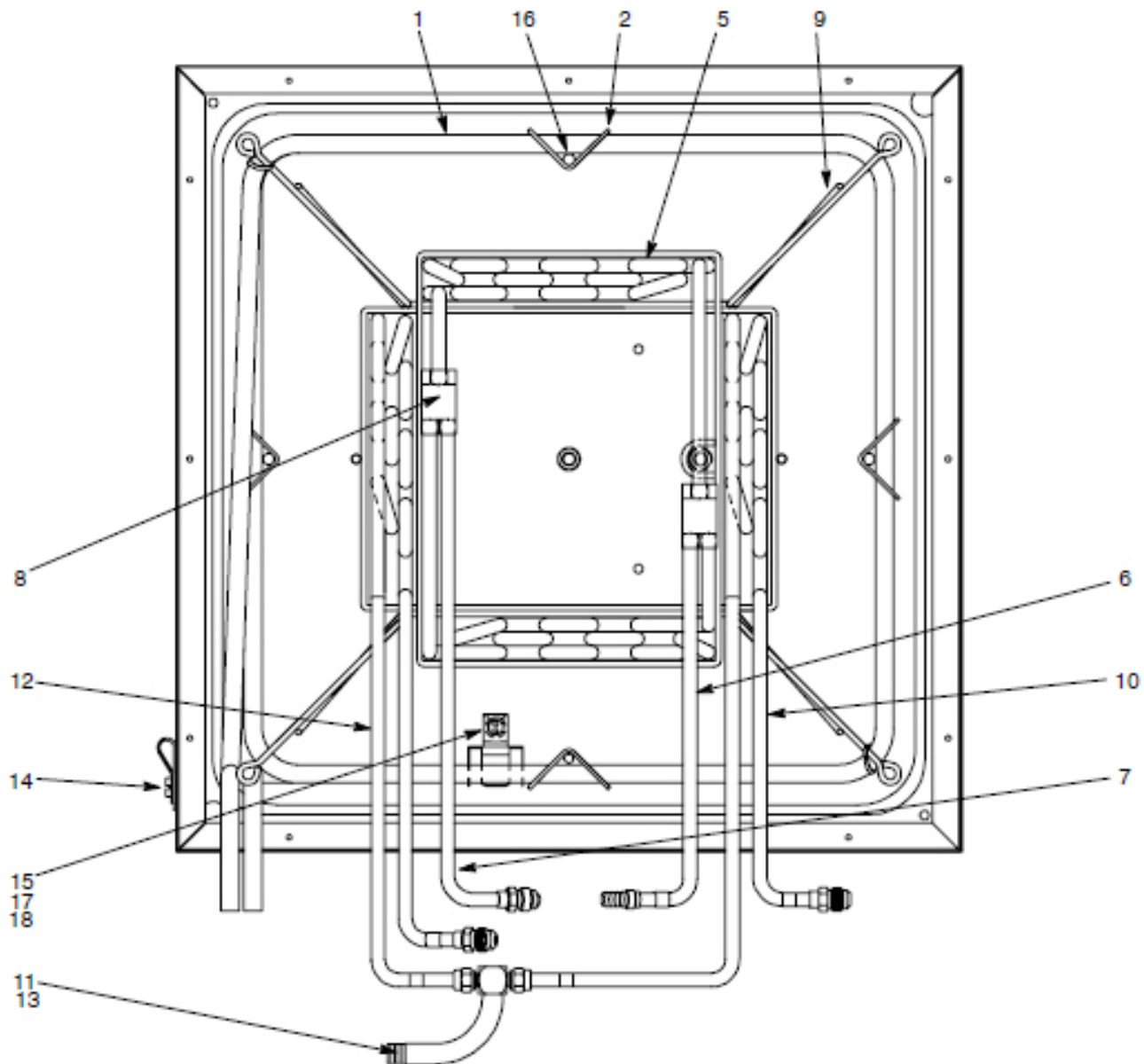


Figure 18. Evaporator Coil Components

Table 18. Evaporator Coil Components

Item No.	Part No.	Description
1	560000273	Evap Coil
2	4279	Spacer Evap
3	560001563	Coil and Tube Asy (Includes 4-13)
4	560002710	Coil Wtr Asy (Includes 5-8)
5	560000269	Coil Cooling
6	560000244	Tube Water In
7	560000246	Tube Water Out
8	560002705	Fitg Coil

Table 18. Evaporator Coil Components

Item No.	Part No.	Description
9	560000293	Rack Coil
10	560000268	Coil Carb Water
11	311304000	Gasket 3/8 MF
12	560000240	Coil Cooling
13	560000220	Fitg T 3/8-Flare By 1/2-Barb
14	319941000	Screw TR 8-32 HXWS 12
15	560000242	Holder Probe
16	560000274	Rod Support
17	560001537	Holder Bulb
18	560001538	Spacer Bulb

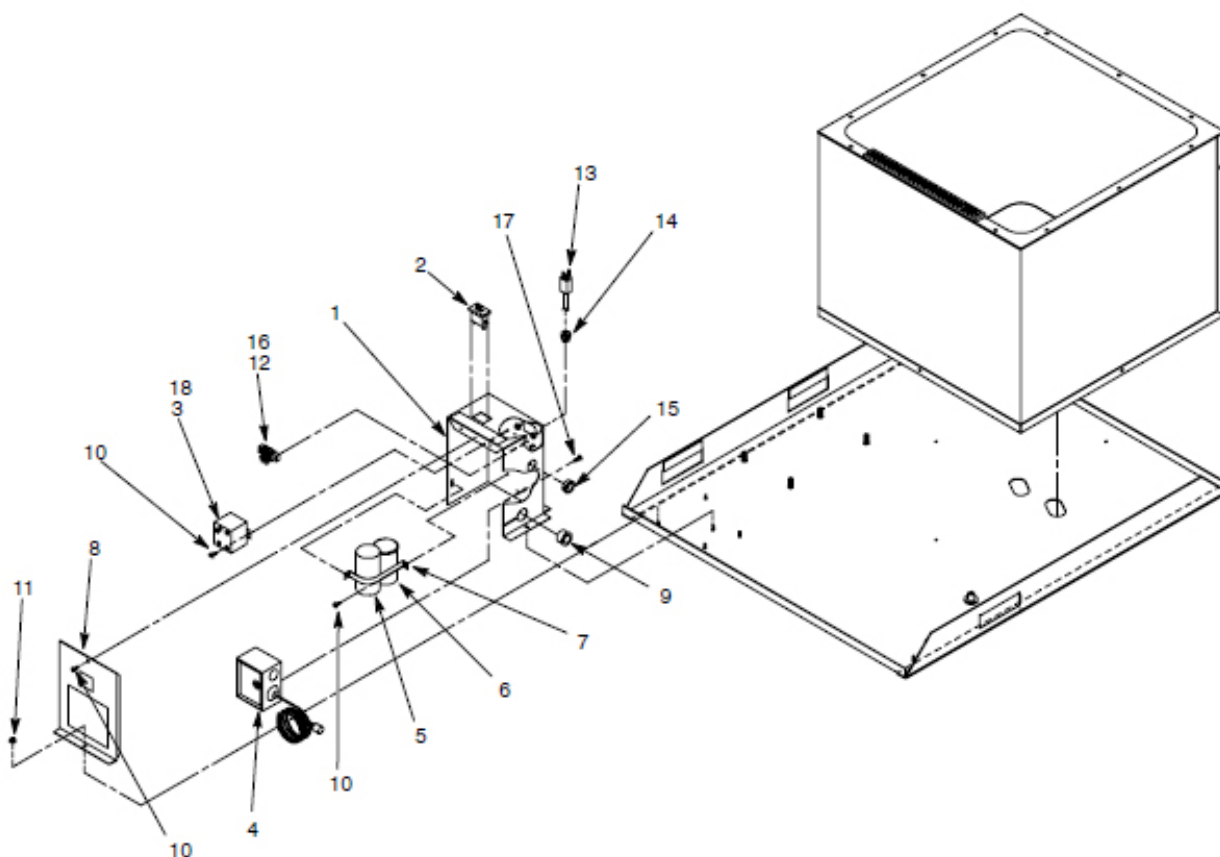


Figure 19. Electrical Box Components

Table 19. Electrical Box Components

Table 19. Electrical Box Components

Item No.	Part No.	Description
1	560000266 560002766	Box Cntl 120V 60HZ Box Cntl 230V 50HZ
2	309645000 560002735	Swt Rocker 120V 60HZ Swt Rocker 230V 50HZ
3	319861000 197461000	Relay Start 120V 60HZ Relay Start 230V 50HZ
4	4187 569000599	Control Ice Bank (Used on 9-30-01 and Before) Control Ice Bank (Used on 10-1-01 and After)
5	319859000 319860000	Capac Srt 115V unit Capac Srt 230V unit
6	319858000 319338000	Capac Run 115V unit Capac Run 230V unit
7	560000254	Strap Capac

Item No.	Part No.	Description
8	560000267 560002767	Cover Cntrl Box 120V 60HZ Cover Cntrl Box 230V 50HZ
9	325800000	Bushing Split
10	319941000	Screw TR 8-32 HXWS 12
11	200498003	Nut Hex No. 8-32
12	320240000	Screw TR 8-32 PAPH 16
13	560001567 560001326	Cord Serv 120V 60HZ Cord Serv 230V 50HZ
14	313621000 4345	Strain Relief 120V 60HZ Receptacle 230V 50HZ
15	313802000	Bushing Snap
16	187876000	Block Term
17	4680	Screw MA 8-32 PAPH 6
18	186150000	Screw MA 8-32 PAPH 12

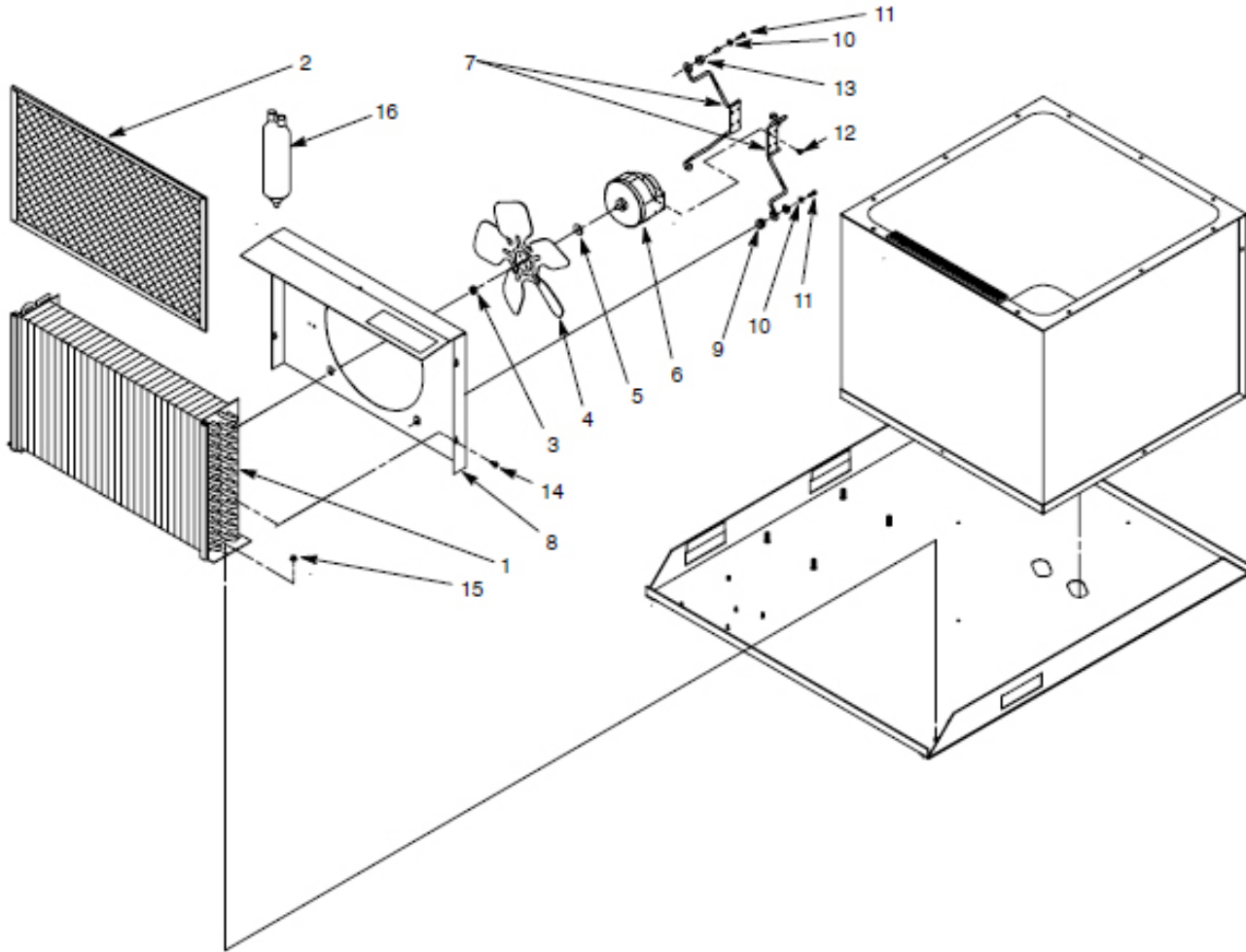


Figure 20. Condenser Components

Table 20. Condenser Components

Item No.	Part No.	Description
1	560000292	Cond Coil
2	560000291	Filter Air Cond
3	189429000	Nut Hex 1/4-20
4	3113	Fan 5-Blade
5	187394000	Cushion Fan Mount
6	4197 560000170	Motor Fan 120V 60HZ 35W Motor Fan 230V 50HZ 35W
7	2944	Brkt Mtr Fan
8	4788	Shroud Cond
9	320539000	Washer Ft .191 I.D.
10	120227000	Washer Lk .194 I.D.

Table 20. Condenser Components

Item No.	Part No.	Description
11	186770000	Screw MA 10-24 RDPH 20
12	186154000	Screw SE 8-36 PAPH 12
13	321484000	Grommet
14	319941000	Screw TR 8-32 HXWS 12
15	200498003	Nut Hex No. 8-32
16	2602	Dryer